



Platform trucks
Roll-containers
Hand washers / Changing room lockers
Storage shelving systems



PLATFORM TRUCKS_____ 198



ROLL CONTAINERS_____ 202



HAND WASHERS_____ 208



HAND TRUCK_____ 210



PAPER TOWEL DISPENSERS_____ 211



CHANGING ROOM LOCKERS_____ 212



STORAGE SHELVING SYSTEMS_____ 214

STAINLESS STEEL PLATFORM TRUCKS

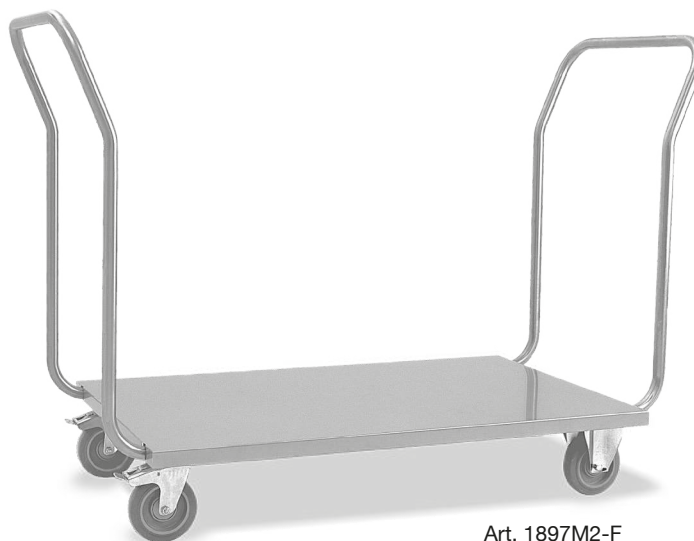
- AISI 304 stainless steel sheet platform
- 1 or 2 stainless steel tube handles (depending on the model)
- 2 Fixed and 2 swivel castors, ø 12.5 cm, grey non marking rubber tread on centre with roller bearing hub



Art. 1895



Art. 1897-F



Art. 1897M2-F

Article	Description	Platform dimension cm	Max dim. cm
1895	1 pushing handle	60x60	60x70x97 h
1896		60x80	60x90x97 h
1897		60x100	60x110x97 h
1895M2	2 pushing handles	60x60	60x80x97 h
1896M2		60x80	60x100x97 h
1897M2		60x100	60x120x97 h
Optional	Description	Suitable for	
F	1 Set with 2 braked castors	All articles	

- Stainless steel 2.5x2.5 cm square tube structure
- Grey rubber bumpers at the corners
- Castors, ø cm 12.5, 2 fixed and 2 swivel with brake, grey non marking rubber tread on centre with roller bearing hub



Art. 1899

Article	Max. dim. open with extended platform cm	Max. dim. unextended platform cm	Max. dim. closed cm
1899	159x60x88 h	110x60x88 h	110x60x26 h

POLYETHYLENE PLATFORM TRUCKS

- Polyethylene base
- Fixed or folding handle in stainless steel tube (depending on the model)
- 2 Fixed and 2 swivel castors, ø 12.5 cm, grey non marking rubber tread on centre with roller bearing hub



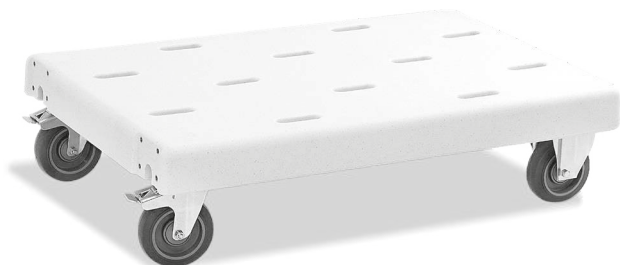
NOTE: SUITABLE FOR OUTDOOR USE



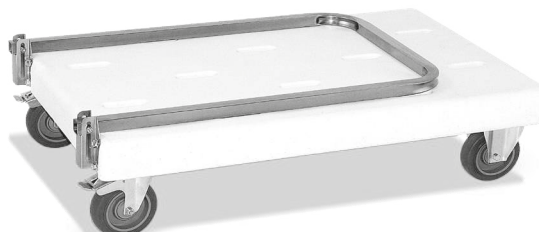
Art. 1840



Art. 1841



Art. 1842

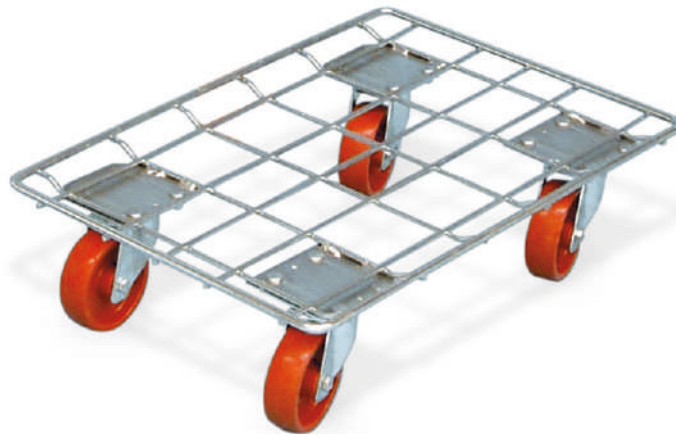


Art. 1841 folded

Article	Pushing handle	Description	Max dim. cm
1842	-	No pushing handle	92x57x27 h
1840	1	Stainless steel rigid round tube handle ø 2.5 cm	107x57x97 h
1841		Stainless steel folding square tube handle 2.5x2.5 cm	95x57x87 h
1840M2	2	Stainless steel rigid round tube handles ø 2.5 cm	107x57x97 h
Optional		Description	Suitable for
F	1	Set with 2 braked castors	All articles



- Bright zinc electroplated steel mesh platform
- Polypropylene swivel castors, ø 10.6 cm



Art. 1836

Article		Max dim. cm	Packaging
1836		62x41x16 h	NOTE: PACKAGING WITH TRANSPARENT FILM

ROLL CONTAINERS

- Roll container composed of 1 wheeled platform and 2 or 3 fixed side frames (depending on the model)
- Welded AISI 304 stainless steel construction
- Removable central shelf (depending on the model)
- 2 fixed and 2 braked swivel castors with heavy-duty brackets, ø 16 cm, grey non marking rubber tread on centre with roller bearing hub



Art. 1830-EINOX



Removable shelf Art. 1831



Art. 1831-EINOX

Article	Description	Max dim. cm	Packaging
1830	1 Platform + 2 side frames	94x65x173 h	NOTE: PACKAGING WITH TRANSPARENT FILM
1831	1 Base + 2 side frames + 1 central shelf		
1832	1 Platform + 3 side frames	145x65x198 h	
1833	1 Platform + 3 side frames + 1 central shelf		
Optional	Description	Suitable for	
E	1 Set with 4 resilient castors, 2 with brake	All articles	
EINOX	1 Set with 4 stainless steel resilient castors, 2 with brake		

600 kg



Art. 1832



Art. 1833

ROLL CONTAINERS

- Roll container composed of a wheeled platform, 2 side frames and 2 straps
- Bright zinc electroplated tubular frame and reinforcing bars
- Polypropylene castors, ø 10.6 cm - 2 swivel (red) and 2 fixed (black)



Art. 1812

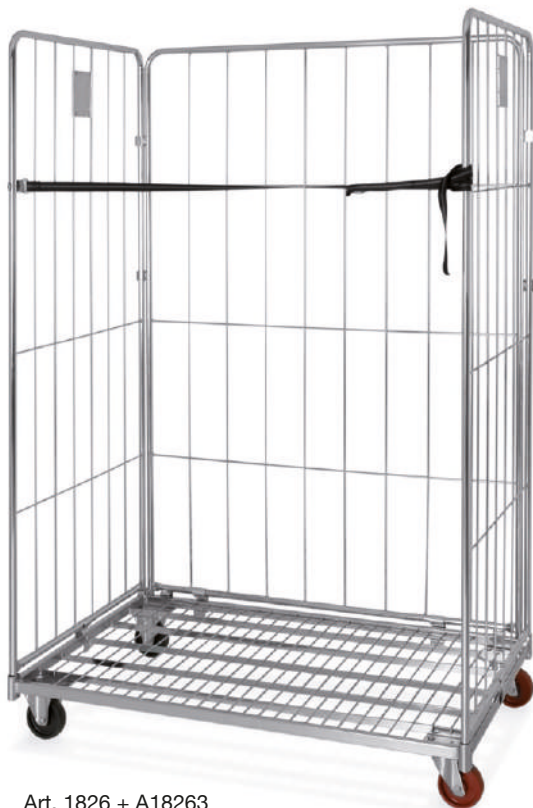


Art. 1812 + A18122 + A18123

Article	Description	Max dim. cm	Packaging
1812	1 Platform + 2 side frames + 2 straps	72x81x180 h	NOTE: PACKAGING WITH TRANSPARENT FILM

Accessories	Description
A18121	Additional nylon strap
A18122	Rear wall
A18123	Front opening 2/3
A18124	Shelf (max. 3 shelves)
A18127	PVC covering with zips

- Roll container composed of a wheeled platform, 2 side frames and 1 strap
- Bright zinc electroplated tubular frame and reinforcing bars
- Polypropylene castors, ø 10.6 cm - 2 swivel (red) and 2 fixed (black)



Art. 1826 + A18263

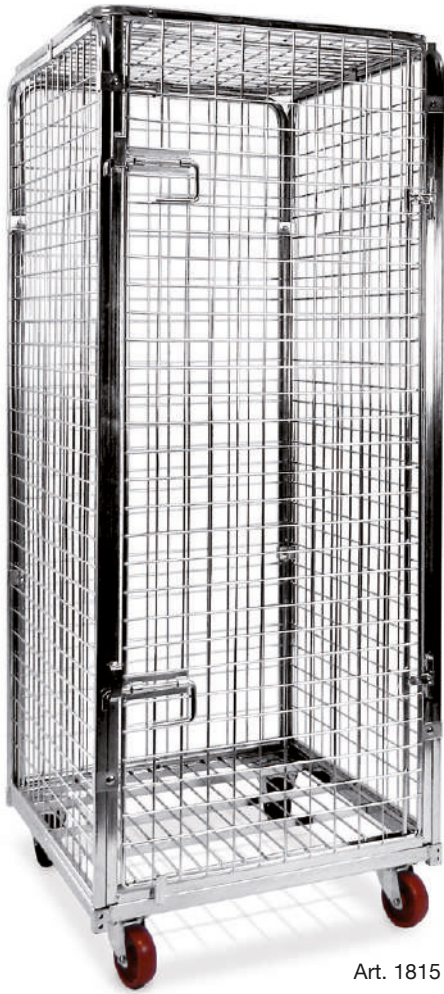


Art. 1826 + A18263 + A18264

Article	Description	Max dim. cm	Packaging
1826	1 Platform + 2 side frames + 1 strap	120x81x180 h	NOTE: PACKAGING WITH TRANSPARENT FILM
Accessories			
A18262	Additional nylon strap		
A18263	Rear wall		
A18264	Front opening 2/3		
A18261	Shelf (max. 3 shelves)		


ANTI-THEFT ROLL CONTAINERS

- Safety anti-theft roll container composed of a wheeled platform, 4 side frames (4th side opening to 270°) and closing lid
- PATENTED square tube frame (mesh cm 50x50) fixed to the base by screws and nuts, representing an inviolable rigid and safe structure
- The front doors can be locked by seals or padlocks
- Polypropylene castors, ø 10.6 cm - 2 swivel (red) and 2 fixed (black)

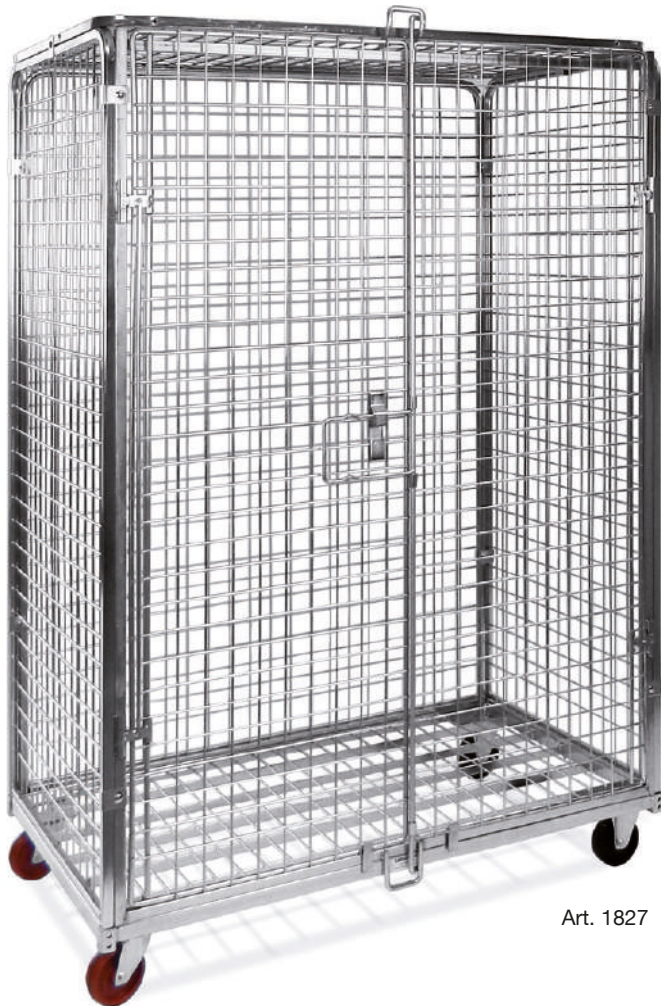


Art. 1815



Article	Description	Max dim. cm	Packaging
1815	1 Platform + 4 sides and closing lid	70x80x180 h	NOTE: PACKAGING WITH TRANSPARENT FILM
Accessories	Description		
A18124	1 Standard intermediate shelf		



- Safety anti-theft roll container composed of a wheeled platform, 4 side frames (the 4th side consists of two 270° opening doors) and closing lid
- PATENTED square tube frame (mesh cm 50x50) fixed to the base by screws and nuts, representing an inviolable rigid and safe structure
- The front doors can be locked by seals or padlocks
- Polypropylene castors, ø 10.6 cm - 2 swivel (red) and 2 fixed (black)



Art. 1827



Article	Description	Max dim. cm	Packaging
1827	1 Platform + 2 side frames and closing lid	120x80x180 h	NOTE: PACKAGING WITH TRANSPARENT FILM

Accessories	Description	
A18261	1 Standard intermediate shelf	
A18271	2 Intermediate shelf with edge	

HAND WASHERS

- AISI 304 stainless steel hand washers
- Tap and drain included



Art. 9480-4040



Art. 9482-4836

semicircular



Art. 9483-4836

semicircular

Article	Description	Max dim. cm
9480-4040	Wall mounted hand washer with 3 cm-high raised edge with "knee" control	40x40x27 h
9482-4836	Wall mounted semicircular hand washer with 30 cm-high raised edge with "knee" control	48x36x52 h
9483-4836	Wall mounted hand washer with 4 cm-high raised edge with "knee" control	48x35x26 h
9484-4040	Free-standing hand washer with "knee" control	40x40x80 h
9484-5040		50x40x80 h
9484-5050		50x50x80 h
9487-4040	Hand washer on cabinet, with 10 cm-high raised edge, hinged door and siphon included	40x40x95 h
9487-5040		50x40x95 h
9487-5050		50x50x95 h



Art. 9484-5040



Art. 9487-5040

HAND TRUCK

- Tubular frame and base in epoxy powder coated steel sheet, red colour
- Pneumatic wheels, ø 26 cm



Art. 1891

Article	Max dim. cm
1891	53x44x105 h



- Stainless steel wall-mounted vertical paper towel dispenser with internal unwinding, satin finish



Art. 2604

- Stainless steel wall-mounted horizontal paper towel dispenser, satin finish







Art. 2608

- Stainless steel wall-mounted paper towel roll holder



Art. 2603

Article	Description	Max dim. cm			 cm	
2604	Vertical paper towel dispenser	ø 25x32 h	3	M	28x28x40 h	4
2608	Horizontal paper towel dispenser	ø 30x33 h				
2603	Paper towel roll holder	38x17x26 h	1			41x20x29 h

CHANGING ROOM LOCKERS

- AISI 430 stainless steel sheet changing room locker
- Sloping roof
- Clothes hook
- Internal partition and shelves
- Lockable doors
- Shoe and hat racks
- Adjustable feet



Art. 9440



Art. 9442



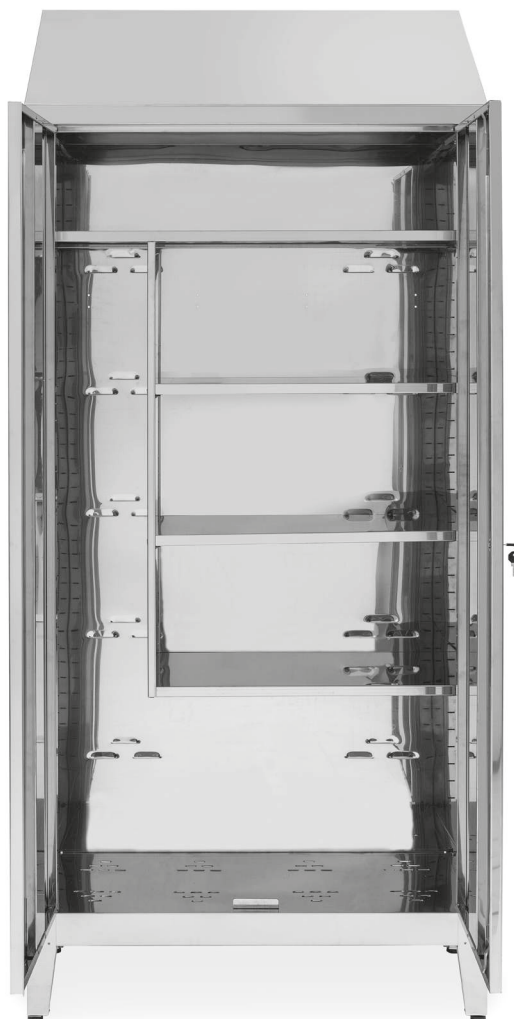
Art. 9444

Article	Description	Max dim. cm
9440	Single locker	50x40x215 h
9442	2-Door locker	95x40x215 h
9444	4-Door locker	

- AISI 430 stainless steel sheet broom locker
- Sloping roof
- Internal partial partition, 3 adjustable shelves
- Lockable doors
- Adjustable feet



Art. 9460



Art. 9462

Article	Description	Max dim. cm
9460	1-Door locker	50x40x215 h
9462	2-Door locker	95x40x215 h

MODULAR SHELVING SYSTEMS

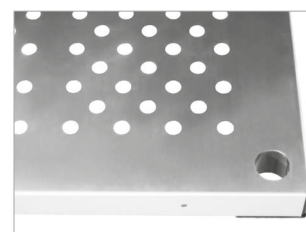
- AISI 304 stainless steel round posts, \varnothing 4 cm, with notches every 10 cm for easy shelf placement
- Stainless steel sheet solid or perforated shelves with plastic angle supports and safety edges to eliminate sharpness
- Adjustable level feet
- Normal shelves: 100 kg/m load capacity
- Reinforced shelves: 150 kg/m load capacity
- Shelves for continuous run systems: 100 kg/m load capacity
- Hooks for continuous runs of shelving and "L"- shaped shelving units



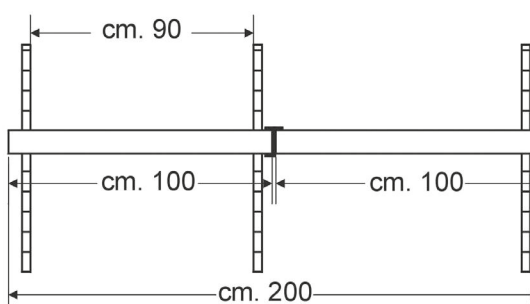
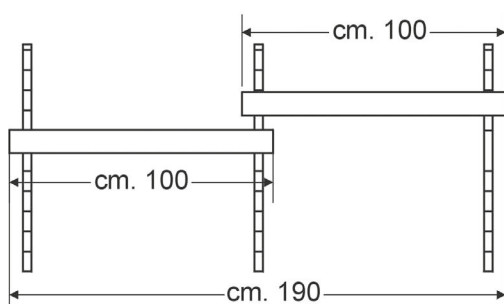
NOTE: CUSTOM MADE SHELF DIMENSIONS UPON REQUEST



Solid shelf



Perforated shelf



SOLID shelves - Capacity 100 kg/m		
Article	Max dim. cm	
PLI3080		80x30
PLI3090		90x30
PLI30100		100x30
PLI30110		110x30
PLI30120		120x30
PLI4080		80x40
PLI4090		90x40
PLI40100		100x40
PLI40110		110x40
PLI40120		120x40
PLI5080		80x50
PLI5090		90x50
PLI50100		100x50
PLI50110		110x50
PLI50120		120x50
PLI6080		80x60
PLI6090		90x60
PLI60100		100x60

PERFORATED shelves - Capacity 100 kg/m		
Article	Max dim. cm	
PAI3080		80x30
PAI3090		90x30
PAI30100		100x30
PAI30110		110x30
PAI30120		120x30
PAI4080		80x40
PAI4090		90x40
PAI40100		100x40
PAI40110		110x40
PAI40120		120x40
PAI5080		80x50
PAI5090		90x50
PAI50100		100x50
PAI50110		110x50
PAI50120		120x50
PAI6080		80x60
PAI6090		90x60
PAI60100		100x60

Round posts, ø 3 cm - Adjustable feet		
Article	Max dim. cm	
MT150		150
MT180		180
MT200		200

Accessories		
Article	Description	
PAG001		Hooks

Reinforced SOLID shelves - Cap. 150 kg/m		
Article	Max dim. cm	
PLIR30100		100x30
PLIR30110		110x30
PLIR30120		120x30
PLIR30130		130x30
PLIR30140		140x30
PLIR40100		100x40
PLIR40110		110x40
PLIR40120		120x40
PLIR40130		130x40
PLIR40140		140x40
PLIR50100		100x50
PLIR50110		110x50
PLIR50120		120x50
PLIR50130		130x50
PLIR50140		140x50
PLIR60100		100x60
PLIR60110		110x60
PLIR60120		120x60
PLIR60130		130x60
PLIR60140		140x60

Reinforced PERFORATED shelves - Cap. 150 kg/m		
Article	Max dim. cm	
PAIR30100		100x30
PAIR30110		110x30
PAIR30120		120x30
PAIR30130		130x30
PAIR30140		140x30
PAIR40100		100x40
PAIR40110		110x40
PAIR40120		120x40
PAIR40130		130x40
PAIR40140		140x40
PAIR50100		100x50
PAIR50110		110x50
PAIR50120		120x50
PAIR50130		130x50
PAIR50140		140x50
PAIR60100		100x60
PAIR60110		110x60
PAIR60120		120x60
PAIR60130		130x60
PAIR60140		140x60

MODULAR SHELVING SYSTEMS

- AISI 304 stainless steel sheet “L”- shaped posts, 3.5x3.5 cm
- Solid or perforated shelves in stainless steel sheet with safety edges to eliminate sharpness
- Stainless steel bolts included
- Optional adjustable feet
- Normal shelves: 100 kg/m load capacity
- Reinforced shelves: 150 kg/m load capacity



NOTE: CUSTOM MADE SHELF DIMENSIONS UPON REQUEST



MODULAR SHELVING SYSTEMS

SOLID shelves - Capacity 100 kg/m

Article	Max dim. cm
PLB3080	80x30
PLB3090	90x30
PLB30100	100x30
PLB30110	110x30
PLB30120	120x30
PLB4080	80x40
PLB4090	90x40
PLB40100	100x40
PLB40110	110x40
PLB40120	120x40
PLB5080	80x50
PLB5090	90x50
PLB50100	100x50
PLB50110	110x50
PLB50120	120x50
PLB6080	80x60
PLB6090	90x60
PLB60100	100x60
PLB60110	110x60
PLB60120	120x60

PERFORATED shelves - Capacity 100 kg/m

Article	Max dim. cm
PAB3080	80x30
PAB3090	90x30
PAB30100	100x30
PAB30110	110x30
PAB30120	120x30
PAB4080	80x40
PAB4090	90x40
PAB40100	100x40
PAB40110	110x40
PAB40120	120x40
PAB5080	80x50
PAB5090	90x50
PAB50100	100x50
PAB50110	110x50
PAB50120	120x50
PAB6080	80x60
PAB6090	90x60
PAB60100	100x60
PAB60110	110x60
PAB60120	120x60

"L"-shaped posts 3.5x3.5 cm

Article	Max dim. cm
MA100	100
MA130	130
MA150	150
MA180	180
MA200	200

Accessories

Article	Description
PR001	Adjustable support foot

Reinforced SOLID shelves - Cap. 150 kg/m

Article	Max dim. cm
PLBR30100	100x30
PLBR30110	110x30
PLBR30120	120x30
PLBR30130	130x30
PLBR30140	140x30
PLBR40100	100x40
PLBR40110	110x40
PLBR40120	120x40
PLBR40130	130x40
PLBR40140	140x40
PLBR50100	100x50
PLBR50110	110x50
PLBR50120	120x50
PLBR50130	130x50
PLBR50140	140x50
PLBR60100	100x60
PLBR60110	110x60
PLBR60120	120x60
PLBR60130	130x60
PLBR60140	140x60

Reinforced PERFORATED shelves - Cap. 150 kg/m

Article	Max dim. cm
PABR30100	100x30
PABR30110	110x30
PABR30120	120x30
PABR30130	130x30
PABR30140	140x30
PABR40100	100x40
PABR40110	110x40
PABR40120	120x40
PABR40130	130x40
PABR40140	140x40
PABR50100	100x50
PABR50110	110x50
PABR50120	120x50
PABR50130	130x50
PABR50140	140x50
PABR60100	100x60
PABR60110	110x60
PABR60120	120x60
PABR60130	130x60
PABR60140	140x60